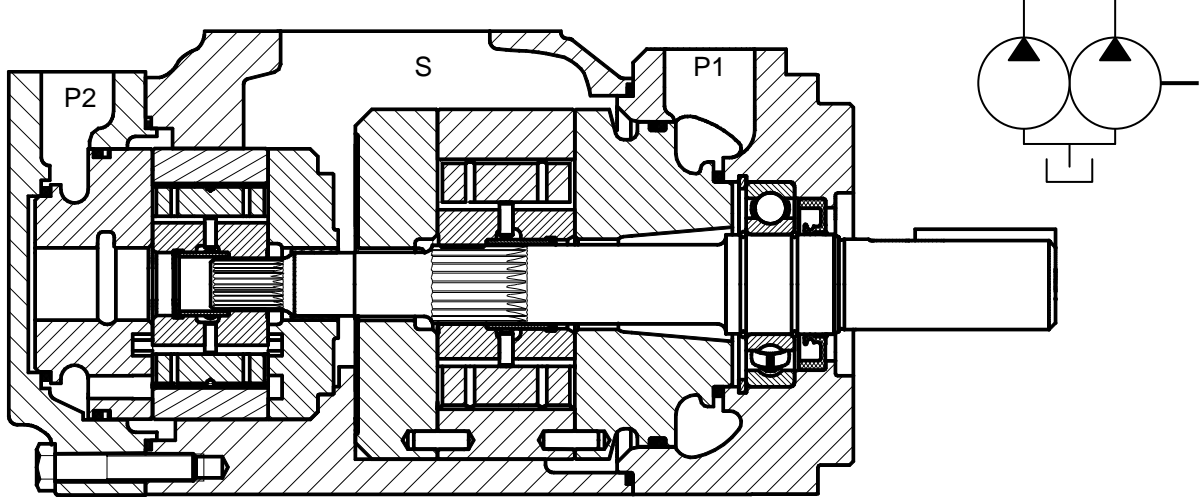


双联叶片泵

T7BB, T67CB, T6CC 系列
T67DB, T6DC, T6DDS 系列
T67EB, T6EC, T6ED, T6EE 系列

(T6CC)



型号说明 例: T6CC-025-020-1R00-C100 - T6DC-045-014-2R00-C1

1. T6CC-025-020-1R00-C100 系列号

SAE 安装	T7BBS	T67CB T67CBW ¹	T6CC T6 逆时针 ¹	
	T67DB T67DBW ²	T6DC T6D 顺时针 ²	T6DDS	
	T67EB	T6EC	T6ED	T6EES ³
公制安装	T7BB	T6EE ³		

¹ T67CBW, T6 逆时针: #2 重载轴
² T67DBW, T6D 顺时针: #5 重载轴
³ T6EE / T6EES: 见“双联尾驱动叶片泵”部分。

2. T6CC-025-020-1R00-C100 泵芯规格

B	C	D	E
B02 5.8	003 10.8	014 47.6	042 132.3
B03 9.8	005 17.2	017 58.2	045 142.4
B04 12.8	006 21.3	020 66.0	050 158.5
B05 15.9	008 26.4	024 79.5	052 164.8
B06 19.8	010 34.1	028 89.7	057 179.8
B07 22.5	012 37.1	031 98.3	062 196.7
B08 24.9	014 46.0	035 111.0	066 213.3
B10 31.8	017 58.3	038 120.3	072 227.1
B12 41.0	020 63.8	042 136.0	085 269.0
B15 50.0	022 70.3	045 145.7	
	025 79.3	050 158.0	
	028 88.8		
	031 100.0		

3. T6CC-025-020-1R00-C100 轴伸

4. T6CC-025-020-1R00-C100 转向

顺时针	R
逆时针	L

5. T6CC-025-020-1R00-C100 油口布置

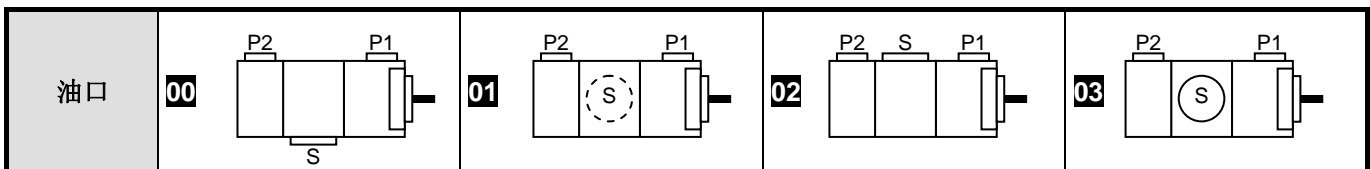
6. T6CC-025-020-1R00-C100 设计号

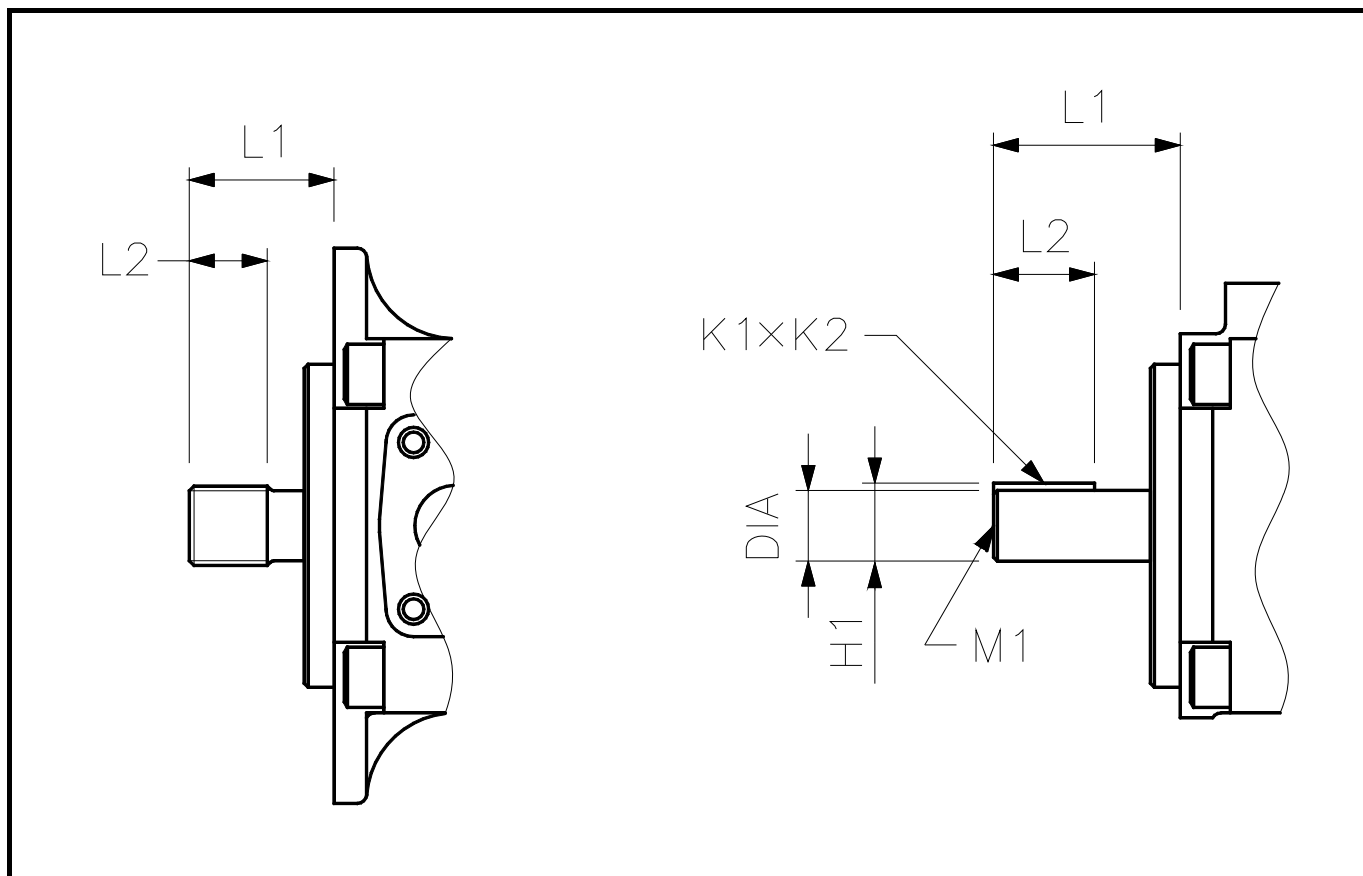
7. T6CC-025-020-1R00-C100 密封等级

丁晴橡胶: 矿物油	1
氟橡胶: 矿物油和防火油液	5

8. T6CC-025-020-1R00-C100 油口尺寸

油口法兰螺纹	公制			UNC		
	3/4"	1"	1 1/4"	3/4"	1"	1 1/4"
T7BB	M1	M0	-	-	-	-
T7BBS	M1	M0	-	01	00	-
T6CC	S: 2 1/2"	-	-	01	00	-
	S: 3"	-	-	11	10	-
T67CB	M1	-	-	11	-	-
T67DB, T67EB	M1	-	-	01	-	-
T6DDS	-	-	M0	-	-	00
T6DC, T6EC, T6ED	没有选项					

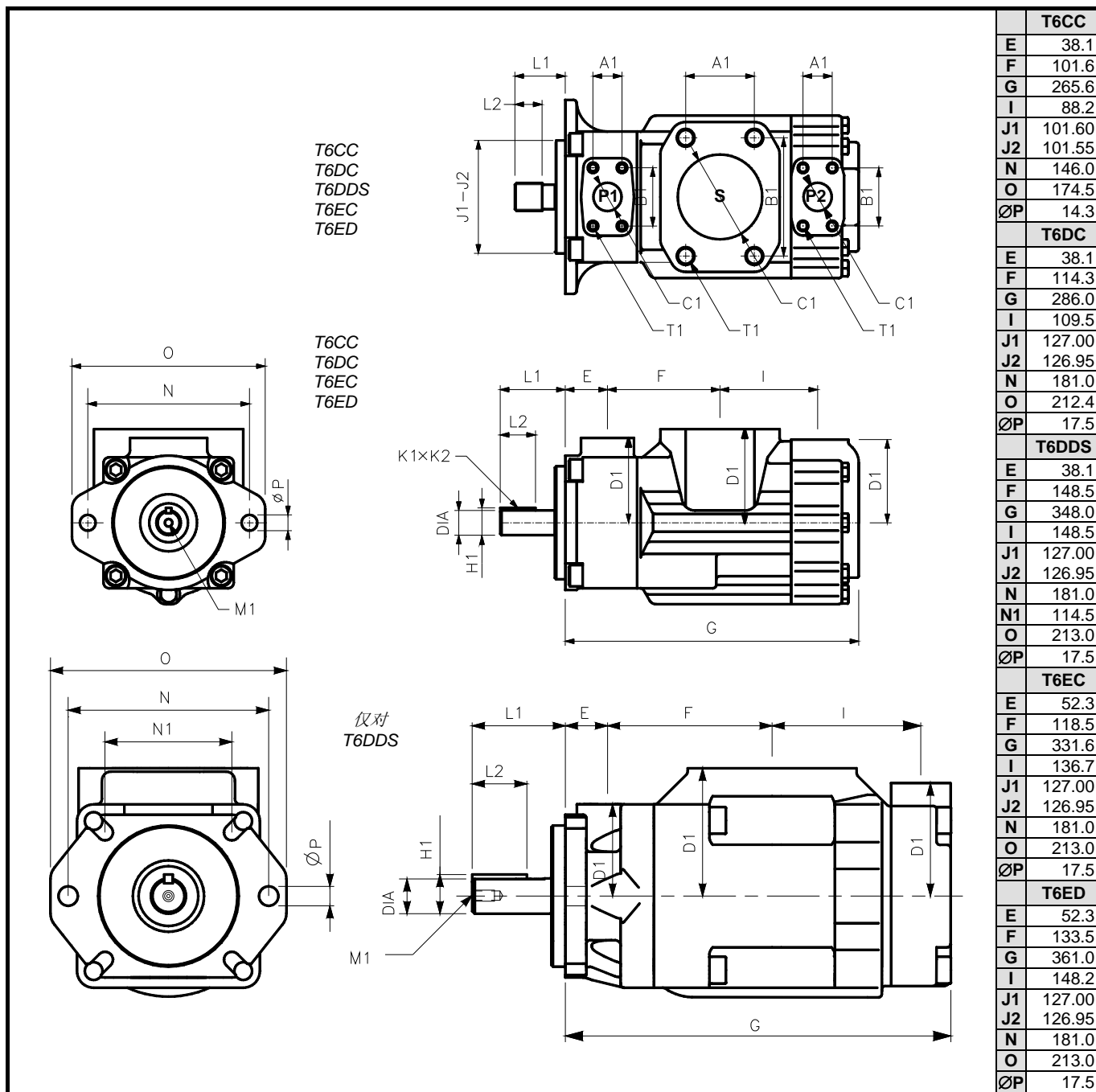




軸伸	最大扭矩 (N.m)						尺寸 (mm)					
	T7BB	T7BBS	T67CB T6CC	T67DB T6DC	T6DDS	T67EB T6EC T6ED	L1	L2	直径	K1 x K2	H1	M1
1	平键: No SAE (Ø22)		238	238			58.2	31.7	22.225 - 22.200	4.76 x 4.71	24.53	
	平键: SAE C (Ø31)				721	686	83.6	49.3	31.750 - 31.700	7.94 x 7.89	35.27	M10 x 20.0
	平键: SAE CC (Ø38)					●	90.9	50.8	38.100 - 38.050	9.52 x 9.47	42.36	M10 x 20.0
2	平键: SAE BB (Ø25)		357	357 ¹			71.4	38.1	25.400 - 25.370	6.35 x 6.30	28.22	M8 x 16.0
	平键: No SAE (Ø31)				577		73.2	38.1	31.750 - 31.700	7.94 x 7.89	35.27	
	平键: SAE-CC					●	91.0	50.8	38.100 - 38.050	9.52 x 9.47	42.36	M10 x 20
	平键: No SAE (Ø31)					577	61.9	38.1	31.750 - 31.700	7.94 x 7.89	35.27	
3	花键: SAE B		●				40.7	24.5	Class 1-J498b, 16/32 d.p. - 13 牙			
	花键: SAE BB			545			45.5	24.5	Class 1-J498b, 16/32 d.p. - 15 牙			
	花键: SAE C				●	971	●	55.7	38.0	Class 1-J498b, 12/24 d.p. - 14 牙		
4	花键: SAE BB		●				45.6	24.5	Class 1-J498b, 16/32 d.p. - 15 牙			
	花键: No SAE				●		77.7	48.0	Class 1-J498b, 12/24 d.p. - 14 牙			
	花键: SAE BB					570	46.0	31.5	Class 1-J498b, 16/32 d.p. - 15 牙			
	花键: SAE CC					●	62.2	31.5	Class 1-J498b, 12/24 d.p. - 17 牙			
5	花键 d: SAE B			343			40.7	24.5	Class 1-J498b, 16/32 d.p. - 13 牙			
	平键: No SAE (Ø34)				● ²	883	83.4	60.0	34.900 - 34.875	7.94 x 7.89	38.42	M8 x 16
	平键: ISO (Ø25)	●					70.0	40.0	25.006 - 24.993	8.0 x 7.96	28.22	
R	平键 (Ø25)			302 ¹			48.7	31.8	25.400 - 25.370	6.35 x 6.30	28.22	M8 x 16
V	平键 (Ø32)			545 ¹			89.0	50.0	32.000 - 31.960	10.00 x 9.98	35.40	M12 x 24
X	平键 (Ø27)			423 ¹			64.1	49.2	26.950 - 26.920	6.35 x 6.30	29.85	M8 x 16
W	平键 (Ø31)			545 ¹			55.5	38.1	31.750 - 31.700	7.94 x 7.89	35.27	M8 x 16

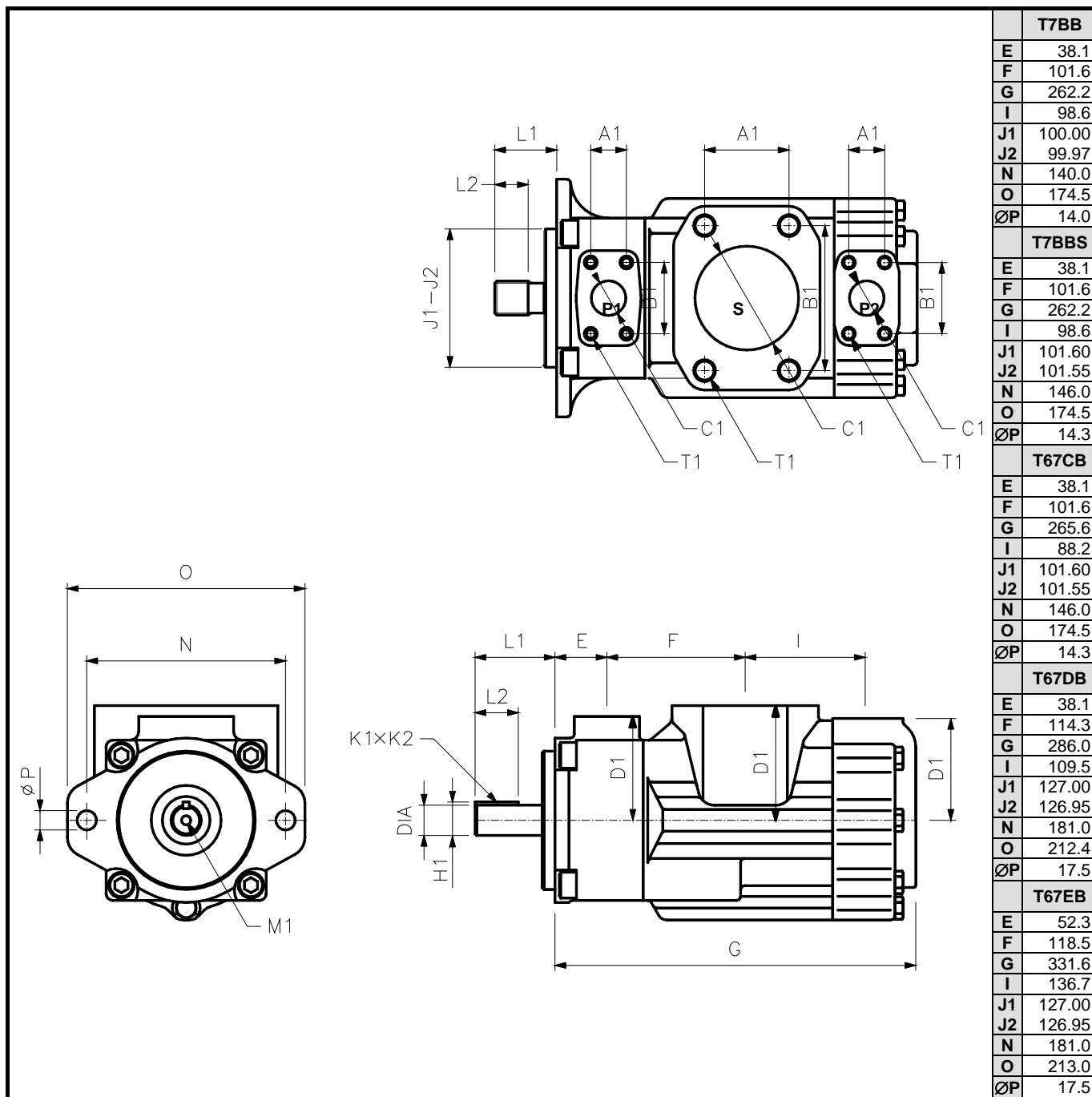
¹ T67CBW, T6CCW

² T67DBW, T6DCW



T6CC	
E	38.1
F	101.6
G	265.6
I	88.2
J1	101.60
J2	101.55
N	146.0
O	174.5
ØP	14.3
T6DC	
E	38.1
F	114.3
G	286.0
I	109.5
J1	127.00
J2	126.95
N	181.0
O	212.4
ØP	17.5
T6DDS	
E	38.1
F	148.5
G	348.0
I	148.5
J1	127.00
J2	126.95
N	181.0
N1	114.5
O	213.0
ØP	17.5
T6EC	
E	52.3
F	118.5
G	331.6
I	136.7
J1	127.00
J2	126.95
N	181.0
O	213.0
ØP	17.5
T6ED	
E	52.3
F	133.5
G	361.0
I	148.2
J1	127.00
J2	126.95
N	181.0
O	213.0
ØP	17.5

油口	尺寸 (mm)						
	A1	B1	ØC1	D1	T1 口螺纹		
					公制	UNC	
T6CC	P1	1"	26.2	52.4	25.4	76.2	³ / ₈ "-16UNC x 19.0
	P2	01-11 : ³ / ₄ "	22.2	47.7	19.0	76.2	³ / ₈ "-16UNC x 19.0
		00-10 : 1"	26.2	52.4	25.4	74.7	³ / ₈ "-16UNC x 19.0
S	10-11 : 2 1/2"	50.8	88.9	63.5	84.1	¹ / ₂ "-13UNC x 23.9	
	00-01 : 3"	61.9	106.4	76.2		⁵ / ₈ "-11UNC x 28.4	
T6DC	P1	1 1/4"	30.2	58.7	31.8	82.6	¹ / ₁₆ "-14UNC x 22.3
	P2	1"	26.2	52.4	25.0	74.7	³ / ₈ "-16UNC x 19.0
	S	3"	62.0	106.4	76.0	88.9	⁵ / ₈ "-11UNC x 28.4
T6DDS	P1	1 1/4"	30.2	58.7	31.8	82.6	M12 x 22.3
	P2	1 1/4"	30.2	58.7	31.8	101.6	M12 x 24.0
	S	4"	77.8	130.2	101.6	115.0	M16 x 30.0
T6EC	P1	1 1/2"	35.7	69.8	37.1	98.4	¹ / ₂ "-13UNC x 23.4
	P2	1"	26.2	52.4	25.0	74.7	³ / ₈ "-16UNC x 19.0
	S	3 1/2"	69.9	120.6	88.9	102.4	⁵ / ₈ "-11UNC x 29.5
T6ED	P1	1 1/2"	35.7	69.8	37.1	98.4	¹ / ₂ "-13UNC x 23.4
	P2	1 1/4"	30.2	58.7	29.5	101.6	¹ / ₁₆ "-14UNC x 24.0
	S	4"	77.8	130.2	101.6	102.4	⁵ / ₈ "-11UNC x 30.0



油口			尺寸 (mm)					T1 口螺纹	
			A1	B1	ØC1	D1	公制	UNC	
T7BB T7BBS	P1	◆1:3/4" ◆0:1"	22.2 26.2	47.6 52.4	19.0 25.4	74.7	M10 x 19.0	3/8"-16UNC x 19.0	
	P2	3/4"	22.2	47.6	19.0	74.7	M10 x 19.0	3/8"-16UNC x 19.0	
	S	2 1/2"	50.8	88.9	63.5	84.1	M12 x 22.4	1/2"-13UNC x 23.9	
T67CB	P1	1"	26.2	52.4	25.4	76.2	M10 x 19.0	3/8"-16UNC x 19.0	
	P2	3/4"	22.2	47.7	19.0	76.2	M10 x 19.0	3/8"-16UNC x 19.0	
	S	2 1/2"	50.8	88.9	63.5	84.1	M12 x 30.0	1/2"-13UNC x 23.9	
T67DB	P1	1 1/4"	30.2	58.7	31.8	82.6	M12 x 22.3	7/16"-14UNC x 22.3	
	P2	3/4"	22.2	47.7	19.0	74.7	M10 x 19.0	3/8"-16UNC x 19.0	
	S	3"	62.0	106.4	76.0	88.9	M16 x 28.4	5/8"-11UNC x 28.4	
T67EB	P1	1 1/2"	35.7	69.8	37.1	98.4	M12 x 23.5	1/2"-13UNC x 23.4	
	P2	3/4"	22.2	47.7	19.0	74.7	M10 x 19.0	3/8"-16UNC x 19.0	
	S	3 1/2"	69.9	120.6	88.9	102.4	M16 x 29.5	5/8"-11UNC x 29.5	